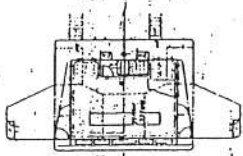
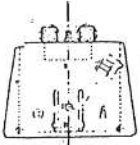


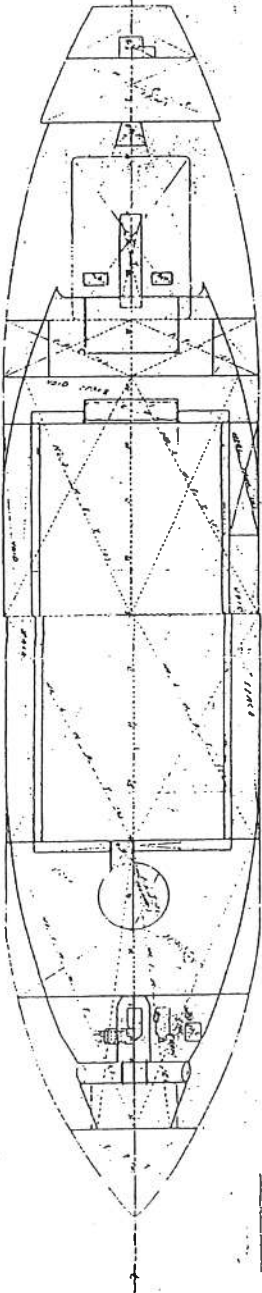
Deck Plan



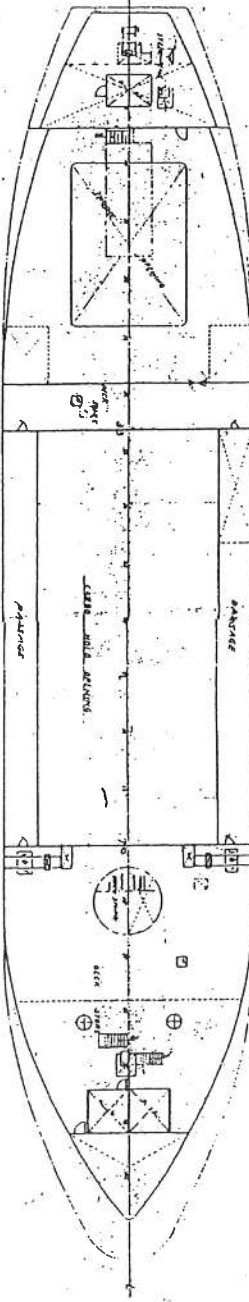
Hull Plan



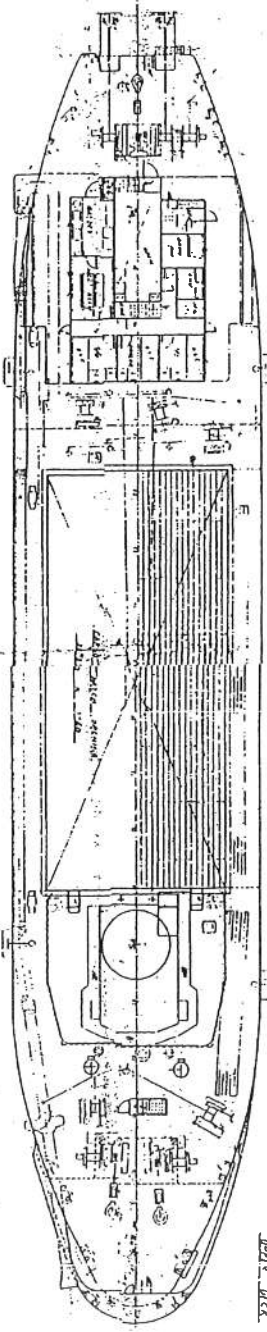
Superstructure Plan



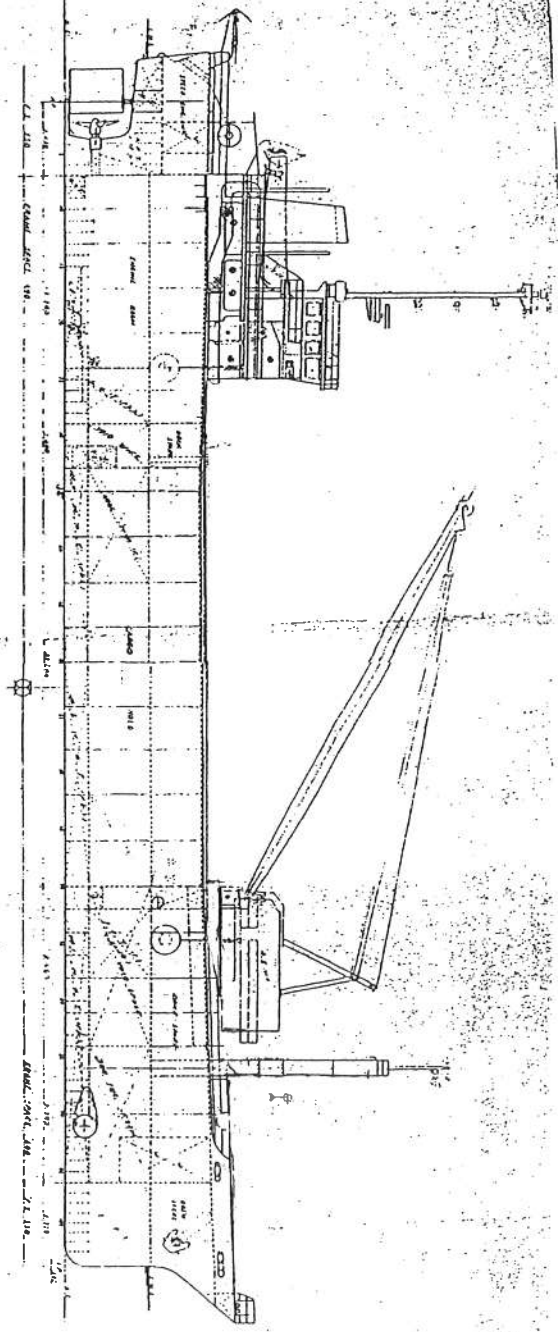
Longitudinal Section



Longitudinal Section



Longitudinal Section



PRINCIPAL PARTICULARS

LENGTH OVER	47.10
BREADTH	7.30
DEPTH	4.40
REGISTERED TONNAGE	416
GROSS TONNAGE	416
NET TONNAGE	416
ENGINE	...
MADE IN	...

本図は、船舶検査手帳添付用の一般配図 船舶中央横断面図である  
 右寺信 電話

船名	第七生丸
船種	一般配図
検査官	...
検査日	...